

WALLMOB™ extendaGO

Integration with SumUp payment terminal - Set up

Last updated 2020-10-27



Integration with SumUp payment terminal

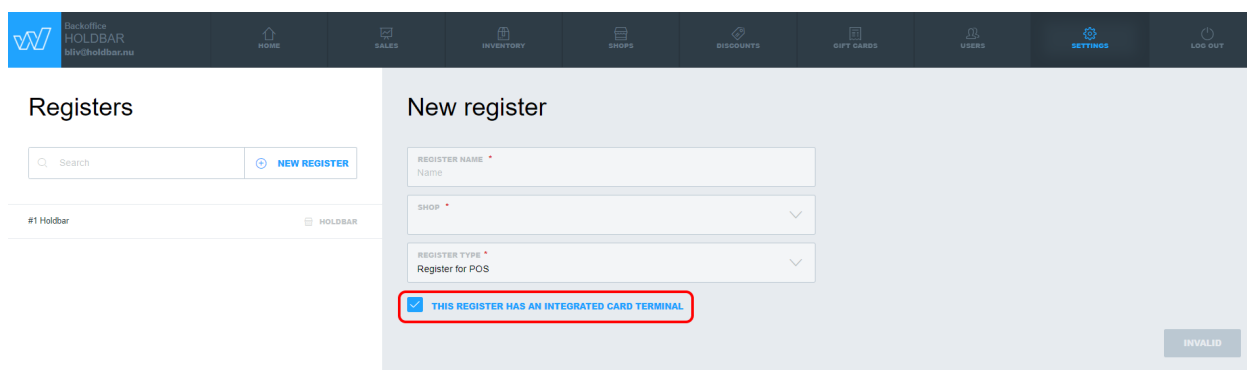
This is the way to set up the integration with SumUp.

Prerequisites

Create a SumUp account and get the card reader at <https://sumup.no/> or your country .com/dk etc. Card readers may also be bought through your Wallmob partner.

Backoffice preparation

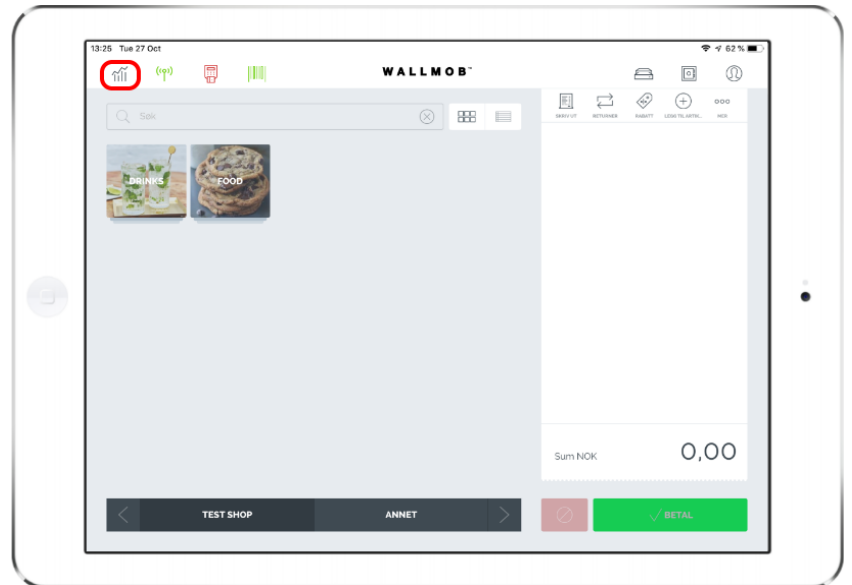
Log in to your Wallmob back office – Select from the menu -Settings -> Registers. Click to enable card integration and save. Then it should look like the picture below.



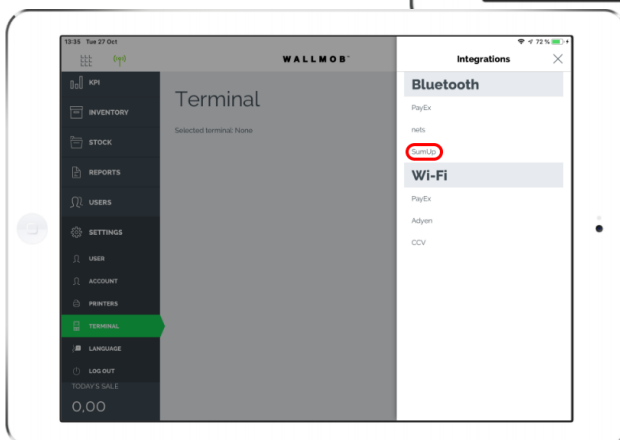
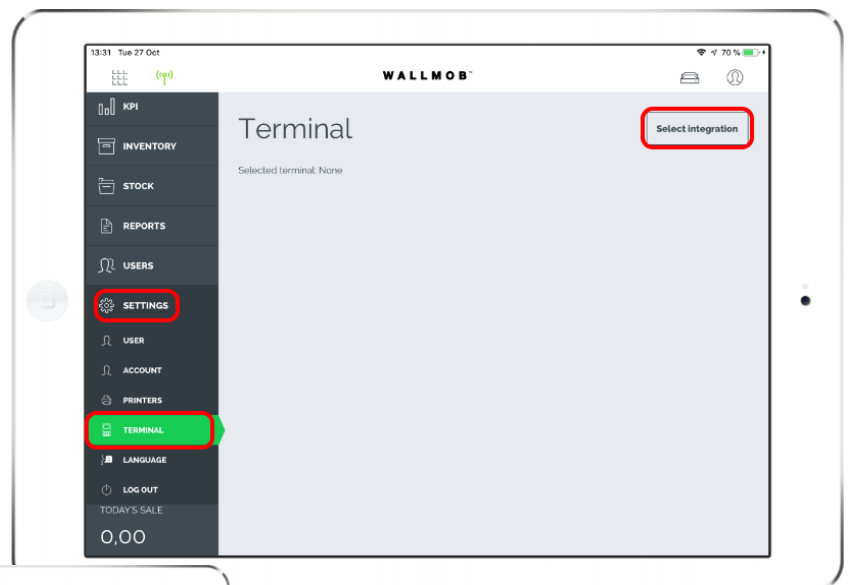
The screenshot shows the Wallmob back office interface. The top navigation bar includes the Wallmob logo, user information (Backoffice, HOLDBAR, bliv@holdbar.nu), and menu items: HOME, SALES, INVENTORY, SHOPS, DISCOUNTS, GIFT CARDS, USERS, SETTINGS, and LOG OUT. The main content area is titled 'Registers' and contains a search bar and a 'NEW REGISTER' button. Below this, there is a list of registers, with one entry '#1 Holdbar' and a 'HOLDBAR' button. The 'New register' form is open, showing fields for 'REGISTER NAME * Name', 'SHOP *', and 'REGISTER TYPE * Register for POS'. A checkbox labeled 'THIS REGISTER HAS AN INTEGRATED CARD TERMINAL' is checked and highlighted with a red box. An 'INVALID' button is visible in the bottom right corner of the form.

Setting up the terminal in WallmobPOS

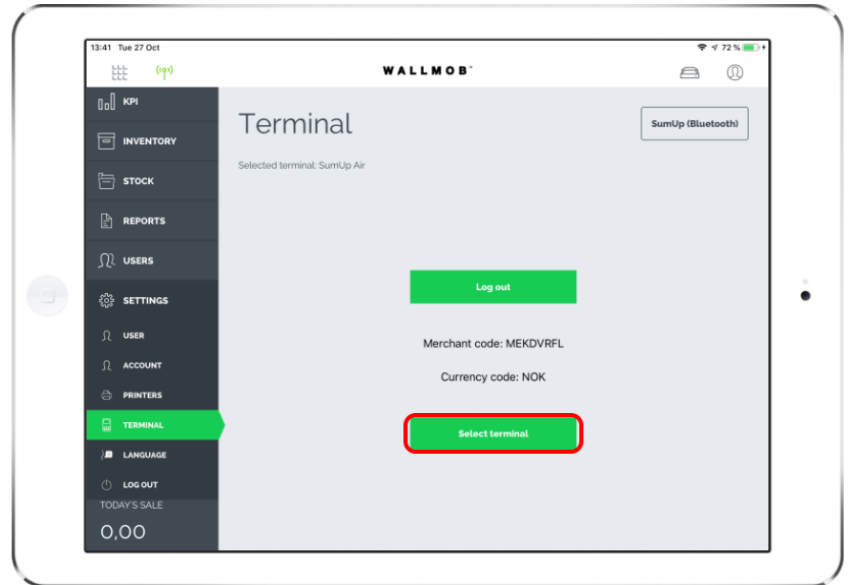
- Open the app on your iPad.
- Log in and select your store and register.
- Then hit the back office symbol.



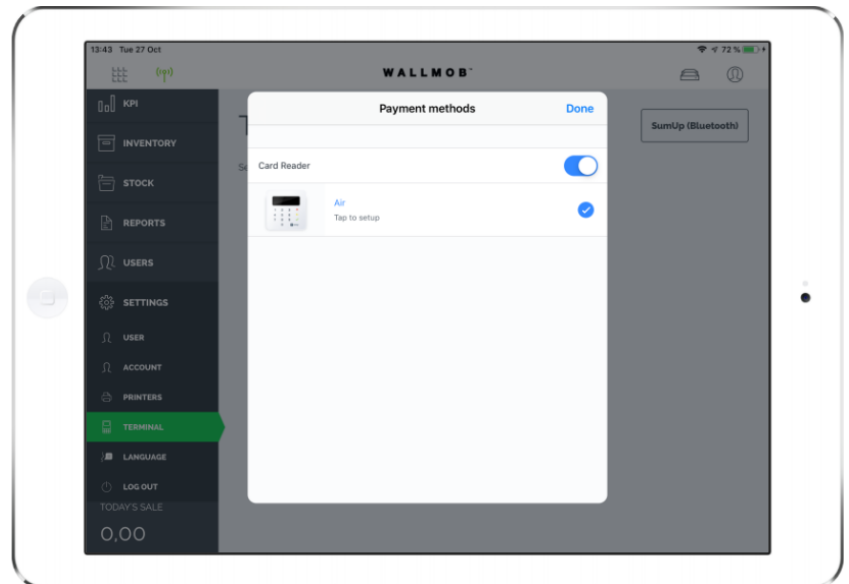
- Select **SETTINGS** - **TERMINAL**, and then “**Select integration**” in the upper right corner.
- Select SumUp and login. (This enables the interaction between SumUp and Wallmob.)



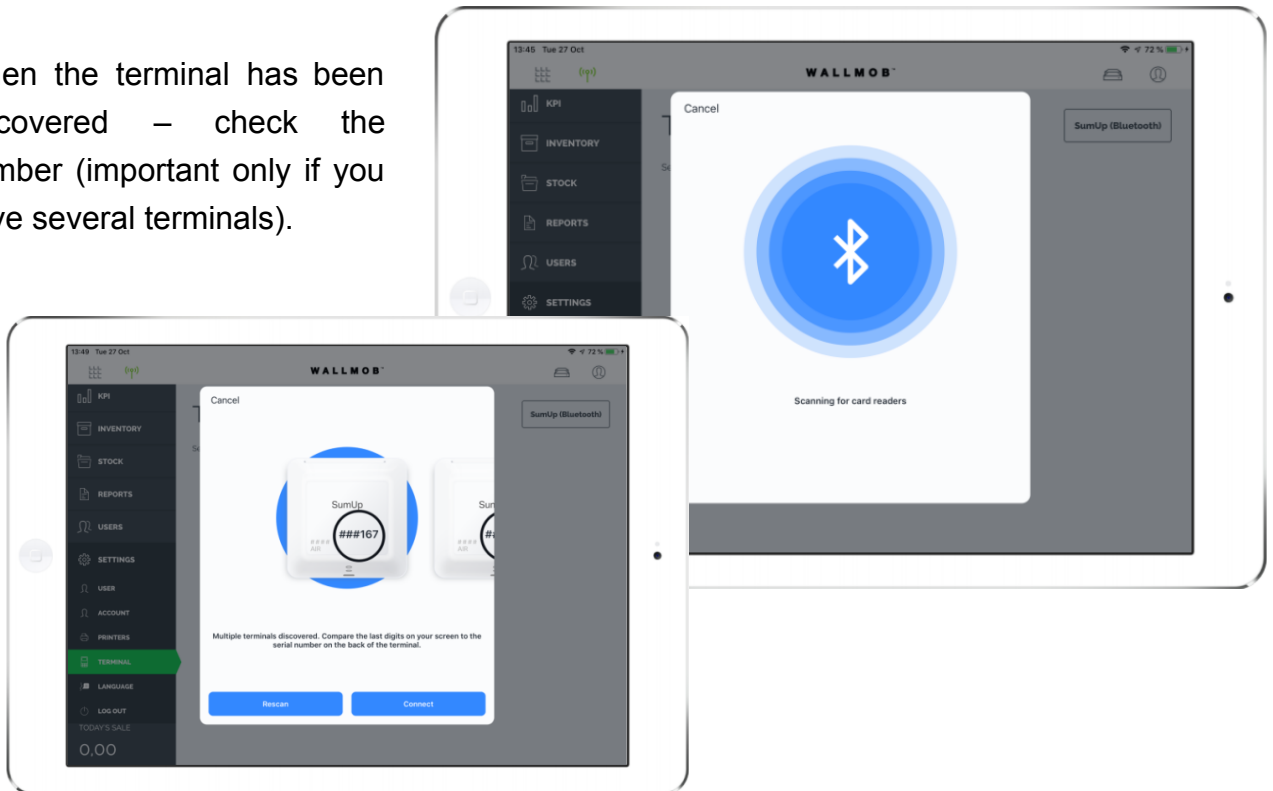
- Click select terminal



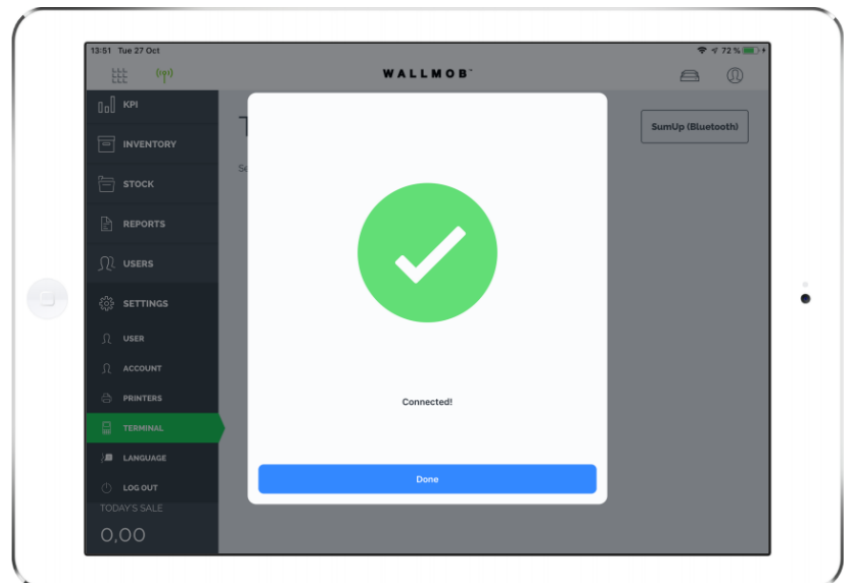
- Turn on the SumUp terminal and Wallmob starts searching for it. (If not detected hold the on button on the terminal until HOLD FOR BT and hold it until BT RESET is shown – then the terminal has been reset and should connect)



- When the terminal has been discovered – check the number (important only if you have several terminals).

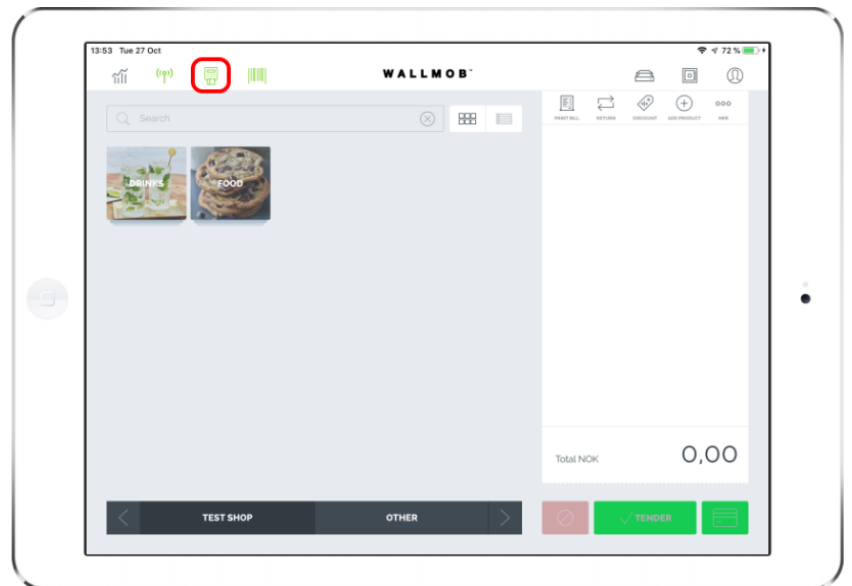


- Connected indicates successful pairing of terminal and Wallmob.



- After pairing the terminal symbol in WallmobPOS should be green.

Congratulations – You can now accept card payment, apple pay and more.



NOTE: When selecting card as payment SumUp will ask for card and standalone card payment is no longer an option if for some reason needed use other as payment type or disable terminal connection in the back office.